

LANDE ES455 Series IP55 19" wall rack cabinets



Offering an 'industrial build' the ES455 Series are wall-mounting 19" steel rack cabinets offers environmental protection to IP55 and impact resistance to IK10. Ideal for outdoor environments the cabinets are built to protect the contents from falling dirt, wind-blown dust particles, rain, snow and splashing water. Available in eight heights and two depths these rack cabinets are supplied with a fitted steel door, cooling vents and fan modules are available to implement forced ventilation if required. The ES455 Series can also be used with an optional plinth or pole mounting kit if required.

The cabinet is a welded, folded steel construction using 1.5mm sheet. The rear panel is sealed other than the fixing points for the included four wall mounting brackets.

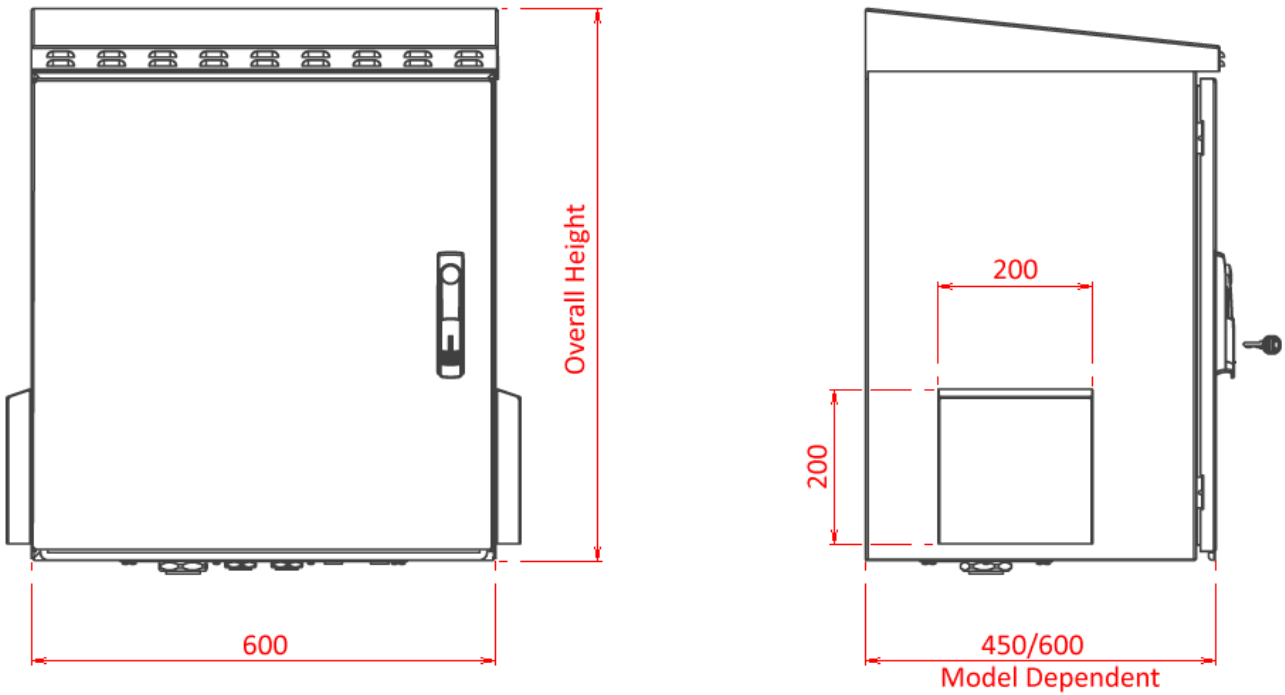
Folded plated steel 19-inch rack-mounting profiles are fitted at the front of the cabinet. Having two sets of perforations the rack mounting profiles allowing cage nuts to fix equipment and accessories across the front of the rack as well as providing mounting points inside the rack for side mounting shelves and chassis guides. They have three cage nut holes for every 1U equipment height on the front face and two per 1U equipment height on the inside face. The rack mounting profiles are also printed with 'U' height measurements to aid installation. They are screwed to metal flanges welded to the walls of the rack with provision to adjust the position deeper into the rack if additional equipment front panel clearance from the door is required. Note that rear rack-mounting profiles are not supplied as standard but are available as optional accessories.

On the cabinet sides there are square covered apertures incorporating air filters for ventilation. The roof of the cabinet has louvered vents along the front face accommodating outgoing airflow. The roof can be raised allowing access to air filters that can accommodate optional fan modules to extract hot/warm air from the cabinet.

The door opening incorporates a sealing gasket with the door itself providing a swing-handle with cylinder lock operating a three-point locking to ensure a good environmental seal and security. The door handle stows into the door when locked almost flush with the front surface. The hinged front door is electrically bonded to the body of the cabinet.

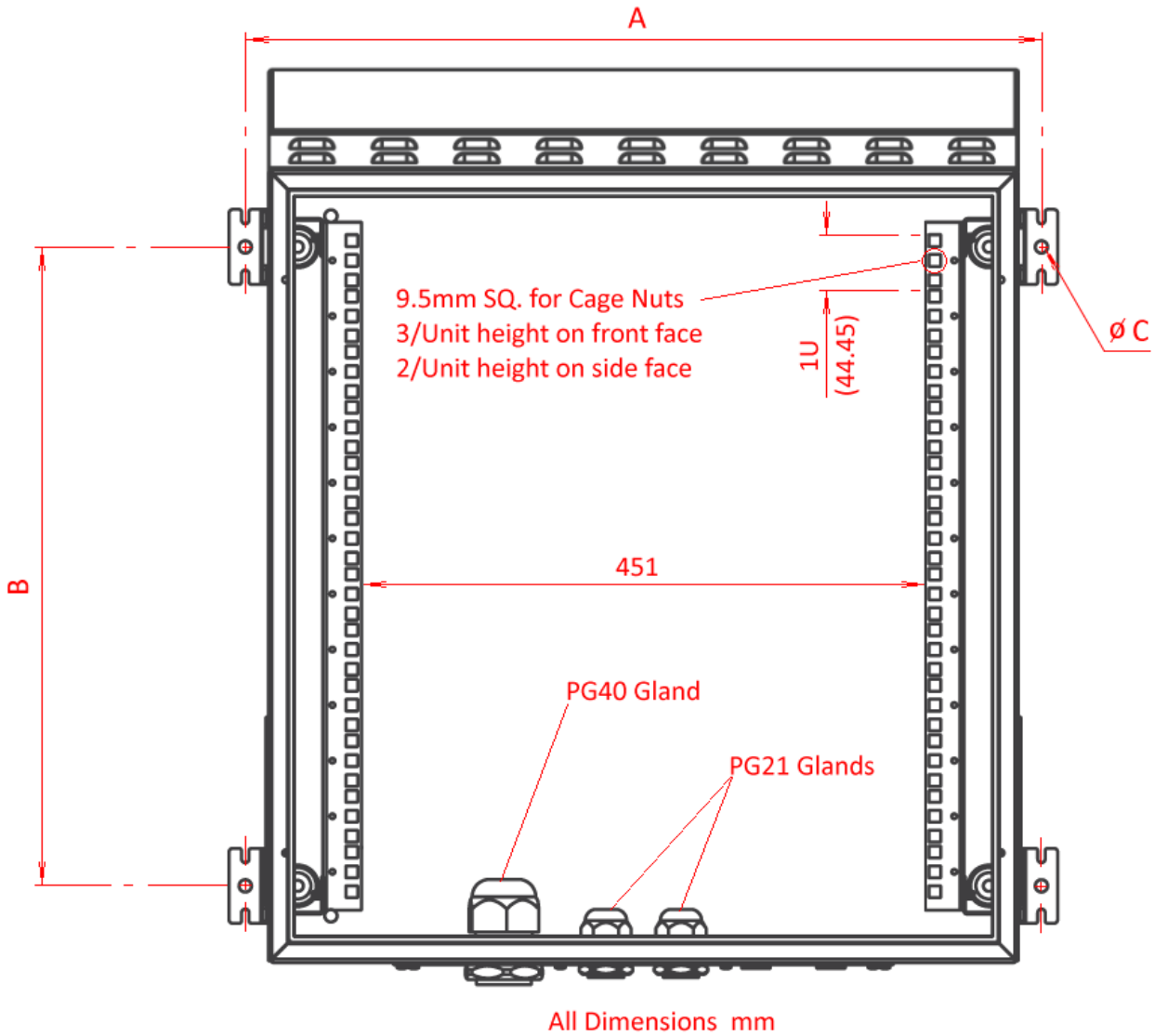
The bottom of the cabinet base provides an aperture for cable access. Two cover plates are supplied to either blank off the aperture with the alternative plate providing one PG48 and two PG21 plastic cable glands as well as two 28mm diameter blind PVC caps.

LANDE ES455 Series IP55 19" wall rack cabinets



	Equipment Height	Overall Height (mm)	Depth (mm)
15-1901	7U	482	450
15-1902	9U	571	450
15-1903	12U	704	450
15-1904	16U	882	450
15-1931	20U	1069	450
15-1932	22U	1157	450
15-1933	24U	1245	450
15-1934	26U	1327	450
15-1905	7U	482	600
15-1906	9U	571	600
15-1907	12U	704	600
15-1908	16U	882	600
15-1936	20U	1069	600
15-1937	22U	1157	600
15-1938	24U	1245	600
15-1939	26U	1327	600

LANDE ES455 Series IP55 19" wall rack cabinets



Cabinet mounting details (door removed for clarity)

		A	B	C
15-1901/15-1905	7U	639	298	10
15-1902/15-1906	9U	639	387	10
15-1903/15-1907	12U	639	520	10
15-1904/15-1908	16U	639	698	10
15-1931/15-1908	20U	639	876	10
15-1932/15-1936	22U	639	964	10
15-1933/15-1938	24U	639	1053	10
15-1934/15-1939	26U	639	1142	10

LANDE ES455 Series IP55 19" wall rack cabinets

Rack Cabinets:

15-1901	LANDE ES4554507/G-L WALL RACK CABINET IP55, 7U, 450d, with steel door, grey
15-1902	LANDE ES4554509/G-L WALL RACK CABINET IP55, 9U, 450d, with steel door, grey
15-1903	LANDE ES4554512/G-L WALL RACK CABINET IP55, 12U, 450d, with steel door, grey
15-1904	LANDE ES4554516/G-L WALL RACK CABINET IP55, 16U, 450d, with steel door, grey
15-1931	LANDE ES4554520/G-L WALL RACK CABINET IP55, 20U, 450d, with steel door, grey
15-1932	LANDE ES4554522/G-L WALL RACK CABINET IP55, 22U, 450d, with steel door, grey
15-1933	LANDE ES4554524/G-L WALL RACK CABINET IP55, 24U, 450d, with steel door, grey
15-1934	LANDE ES4554526/G-L WALL RACK CABINET IP55, 26U, 450d, with steel door, grey
15-1905	LANDE ES4556007/G-L WALL RACK CABINET IP55, 7U, 600d, with steel door, grey
15-1906	LANDE ES4556009/G-L WALL RACK CABINET IP55, 9U, 600d, with steel door, grey
15-1907	LANDE ES4556012/G-L WALL RACK CABINET IP55, 12U, 600d, with steel door, grey
15-1908	LANDE ES4556016/G-L WALL RACK CABINET IP55, 16U, 600d, with steel door, grey
15-1936	LANDE ES4556020/G-L WALL RACK CABINET IP55, 20U, 600d, with steel door, grey
15-1937	LANDE ES4556022/G-L WALL RACK CABINET IP55, 22U, 600d, with steel door, grey
15-1938	LANDE ES4556024/G-L WALL RACK CABINET IP55, 24U, 600d, with steel door, grey
15-1939	LANDE ES4556026/G-L WALL RACK CABINET IP55, 26U, 600d, with steel door, grey

Accessories:

15-1909	LANDE ES4550001/G-L FAN MODULE For ES455 wall cabinet, 1 fan, filtered, switched
15-1910	LANDE ES4550002/G-L FAN MODULE For ES455 wall cabinet, 2 fan, filtered, switched
15-1917	LANDE SPARE RACK PROFILE For ES455 or Proline wall cabinet, 7U, printed (pair)
15-1918	LANDE SPARE RACK PROFILE For ES455 or Proline wall cabinet, 9U, printed (pair)
15-1919	LANDE SPARE RACK PROFILE For ES455 or Proline wall cabinet, 12U, printed (pair)
15-1920	LANDE SPARE RACK PROFILE For ES455 or Proline wall cabinet, 16U, printed (pair)
12-7261	LANDE SPARE RACK PROFILE For ES362, ES455 wall cabinet, 24U, printed (pair)
12-7265	LANDE SPARE RACK PROFILE For ES362, ES455 cabinet, 22U, printed (pair)
12-7266	LANDE SPARE RACK PROFILE For ES362, ES455 cabinet, 26U, printed (pair)
15-1911	LANDE PLINTH KIT for ES455 rack, 600 wide, 450 deep, grey
15-1912	LANDE PLINTH KIT for ES455 rack, 600 wide, 600 deep, grey
15-1913	LANDE POLE MOUNT KIT for ES455 rack, 5-6 inch pole diameter
12-7004	CANFORD ADJUSTABLE CHASSIS GUIDES For 600/800 deep racks (pair)
12-7005	CANFORD ADJUSTABLE CHASSIS GUIDES For 800/1000 deep racks (pair)

Diagram showing plinth option

Fixings included with plinth.

Four M8 x 20mm Hex head bolts with washers secure cabinet to plinth, (M8 captive nuts on underside of plinth top surface).

Four M8 x 15mm Carriage style bolts complete with nuts and washers included for fixing plinth to floor. Alternative fixings can be used if required.

Plinths have 4x 11.8mm holes for floor fixings:

600 x 450 plinth	400 x 310 centres
600 x 600 plinth	461 x 400 centres

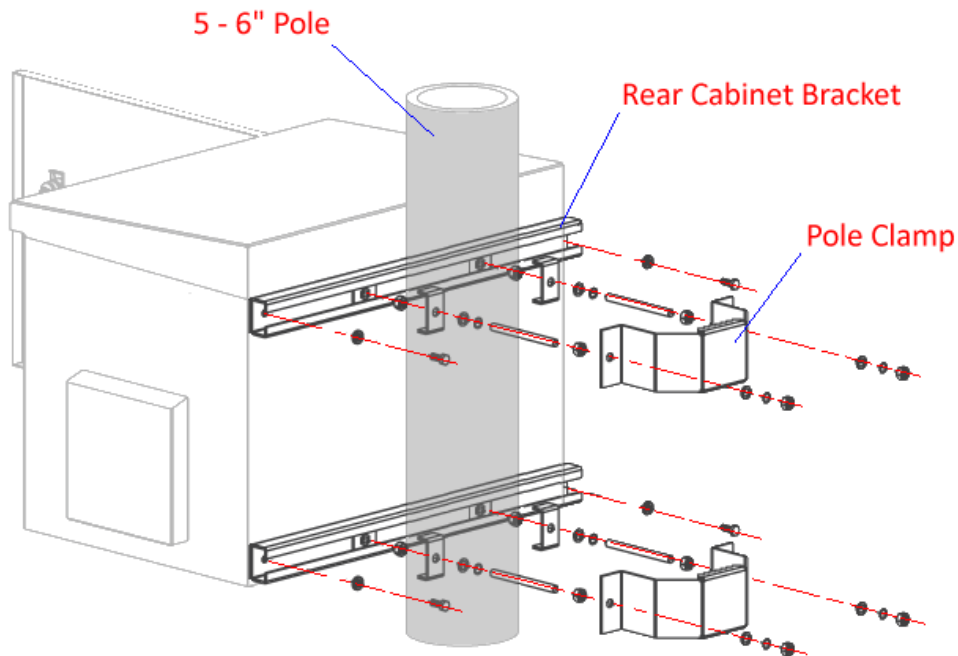
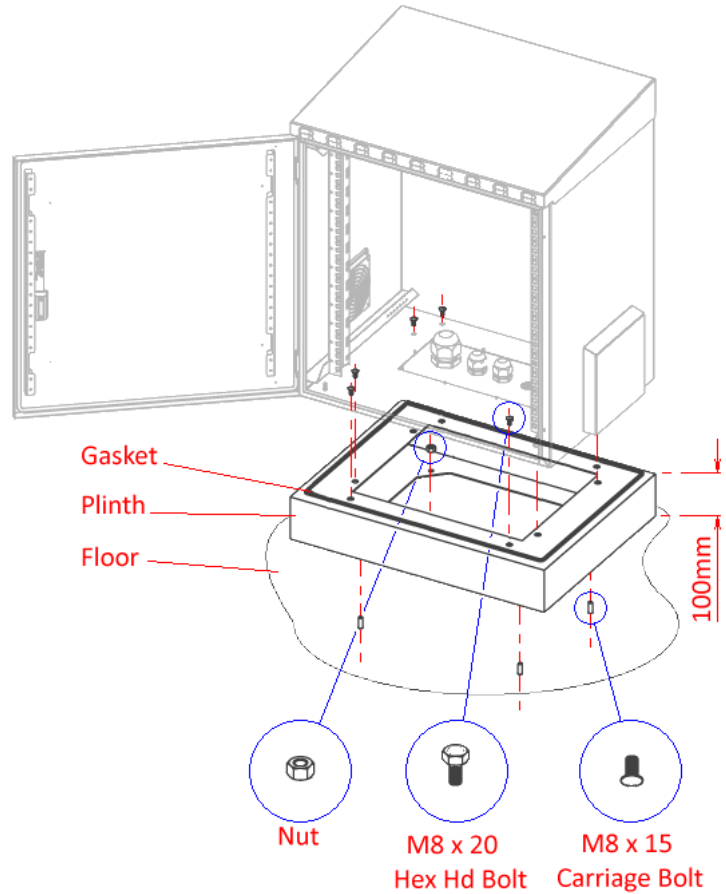


Diagram showing pole mount option

All necessary fixtures and fittings included.